

## Spider Mites

The most common spider mites that attack plants are two spotted spider mite (*Tetranychus urticae*) and spruce spider mite (*Oligonychus ununguis*). These tiny arachnids feed by piercing individual plant cells and removing the contents. This causes tiny yellow or white speckles on infested leaves. When a large number of these feeding spots occur near each other, the foliage takes on a yellow or bronzed appearance. Heavily infested plants may be discolored, stunted or even killed.



### Control

- Knock spider mites off the plant with a forceful stream of water from a hose.
- Apply insecticidal soap, being sure to cover both the upper and lower leaf surfaces.
- Use a pesticide. Spider mites are not killed by regular insecticides, so be sure the pesticide label indicates it is a “miticide.”

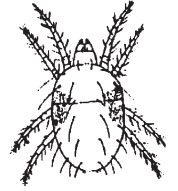
Provided by

[wimastergardener.org](http://wimastergardener.org)



## Spider Mites

The most common spider mites that attack plants are two spotted spider mite (*Tetranychus urticae*) and spruce spider mite (*Oligonychus ununguis*). These tiny arachnids feed by piercing individual plant cells and removing the contents. This causes tiny yellow or white speckles on infested leaves. When a large number of these feeding spots occur near each other, the foliage takes on a yellow or bronzed appearance. Heavily infested plants may be discolored, stunted or even killed.



### Control

- Knock spider mites off the plant with a forceful stream of water from a hose.
- Apply insecticidal soap, being sure to cover both the upper and lower leaf surfaces.
- Use a pesticide. Spider mites are not killed by regular insecticides, so be sure the pesticide label indicates it is a “miticide.”

Provided by

[wimastergardener.org](http://wimastergardener.org)



## Spider Mites

The most common spider mites that attack plants are two spotted spider mite (*Tetranychus urticae*) and spruce spider mite (*Oligonychus ununguis*). These tiny arachnids feed by piercing individual plant cells and removing the contents. This causes tiny yellow or white speckles on infested leaves. When a large number of these feeding spots occur near each other, the foliage takes on a yellow or bronzed appearance. Heavily infested plants may be discolored, stunted or even killed.



### Control

- Knock spider mites off the plant with a forceful stream of water from a hose.
- Apply insecticidal soap, being sure to cover both the upper and lower leaf surfaces.
- Use a pesticide. Spider mites are not killed by regular insecticides, so be sure the pesticide label indicates it is a “miticide.”

Provided by

[wimastergardener.org](http://wimastergardener.org)



## Spider Mites

The most common spider mites that attack plants are two spotted spider mite (*Tetranychus urticae*) and spruce spider mite (*Oligonychus ununguis*). These tiny arachnids feed by piercing individual plant cells and removing the contents. This causes tiny yellow or white speckles on infested leaves. When a large number of these feeding spots occur near each other, the foliage takes on a yellow or bronzed appearance. Heavily infested plants may be discolored, stunted or even killed.



### Control

- Knock spider mites off the plant with a forceful stream of water from a hose.
- Apply insecticidal soap, being sure to cover both the upper and lower leaf surfaces.
- Use a pesticide. Spider mites are not killed by regular insecticides, so be sure the pesticide label indicates it is a “miticide.”

Provided by

[wimastergardener.org](http://wimastergardener.org)



## Additional Resources

### Spider Mites

- UW-Extension Fact Sheet XHT1109, *Spruce Spider Mite*, at <https://hort.uwex.edu/articles/spruce-spider-mite/>

## Additional Resources

### Spider Mites

- UW-Extension Fact Sheet XHT1109, *Spruce Spider Mite*, at <https://hort.uwex.edu/articles/spruce-spider-mite/>

## Additional Resources

### Spider Mites

- UW-Extension Fact Sheet XHT1109, *Spruce Spider Mite*, at <https://hort.uwex.edu/articles/spruce-spider-mite/>

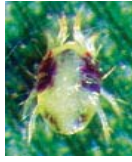
## Additional Resources

### Spider Mites

- UW-Extension Fact Sheet XHT1109, *Spruce Spider Mite*, at <https://hort.uwex.edu/articles/spruce-spider-mite/>

## Spider Mites

The most common spider mites that attack plants are two spotted spider mite (*Tetranychus urticae*) and spruce spider mite (*Oligonychus ununguis*). These tiny arachnids feed by piercing individual plant cells and removing the contents. This causes tiny yellow or white speckles on infested leaves. When a large number of these feeding spots occur near each other, the foliage takes on a yellow or bronzed appearance. Heavily infested plants may be discolored, stunted or even killed.



### Control

- Knock spider mites off the plant with a forceful stream of water from a hose.
- Apply insecticidal soap, being sure to cover both the upper and lower leaf surfaces.
- Use a pesticide. Spider mites are not killed by regular insecticides, so be sure the pesticide label indicates it is a “miticide.”

Provided by

[wimastergardener.org](http://wimastergardener.org)



## Spider Mites

The most common spider mites that attack plants are two spotted spider mite (*Tetranychus urticae*) and spruce spider mite (*Oligonychus ununguis*). These tiny arachnids feed by piercing individual plant cells and removing the contents. This causes tiny yellow or white speckles on infested leaves. When a large number of these feeding spots occur near each other, the foliage takes on a yellow or bronzed appearance. Heavily infested plants may be discolored, stunted or even killed.



### Control

- Knock spider mites off the plant with a forceful stream of water from a hose.
- Apply insecticidal soap, being sure to cover both the upper and lower leaf surfaces.
- Use a pesticide. Spider mites are not killed by regular insecticides, so be sure the pesticide label indicates it is a “miticide.”

Provided by

[wimastergardener.org](http://wimastergardener.org)



## Spider Mites

The most common spider mites that attack plants are two spotted spider mite (*Tetranychus urticae*) and spruce spider mite (*Oligonychus ununguis*). These tiny arachnids feed by piercing individual plant cells and removing the contents. This causes tiny yellow or white speckles on infested leaves. When a large number of these feeding spots occur near each other, the foliage takes on a yellow or bronzed appearance. Heavily infested plants may be discolored, stunted or even killed.



### Control

- Knock spider mites off the plant with a forceful stream of water from a hose.
- Apply insecticidal soap, being sure to cover both the upper and lower leaf surfaces.
- Use a pesticide. Spider mites are not killed by regular insecticides, so be sure the pesticide label indicates it is a “miticide.”

Provided by

[wimastergardener.org](http://wimastergardener.org)



## Spider Mites

The most common spider mites that attack plants are two spotted spider mite (*Tetranychus urticae*) and spruce spider mite (*Oligonychus ununguis*). These tiny arachnids feed by piercing individual plant cells and removing the contents. This causes tiny yellow or white speckles on infested leaves. When a large number of these feeding spots occur near each other, the foliage takes on a yellow or bronzed appearance. Heavily infested plants may be discolored, stunted or even killed.



### Control

- Knock spider mites off the plant with a forceful stream of water from a hose.
- Apply insecticidal soap, being sure to cover both the upper and lower leaf surfaces.
- Use a pesticide. Spider mites are not killed by regular insecticides, so be sure the pesticide label indicates it is a “miticide.”

Provided by

[wimastergardener.org](http://wimastergardener.org)

